


toPet
WWW.TOPET.CA



**PIONEERING PET
HEALTHCARE,
ONE WAG AT A TIME!**



toPet



TOPET revolutionizes pet healthcare with a Smart At-home Pet Health Diagnostic Platform, gamification, and a Pet Symptom Checker. We empower pet owners and professionals, ensuring early detection and affordable care for our beloved companions. Join us for a future where pet well-being is proactive, accessible, and compassionate.

WWW.TOPET.CA

toPet

WWW.TOPET.CA



TOPET's user-friendly platform simplifies pet healthcare. Pet owners can easily utilize our Smart At-home Pet Health Diagnostic Platform, track their pet's well-being through sensors and visual questionnaires, and receive valuable insights through the Pet Symptom Checker. Engage in gamified challenges for more accurate data, and effortlessly connect with veterinarians through dedicated dashboards. Whether at home or on the go, TOPET ensures proactive and informed pet care, making it accessible for everyone.



Features

Smart At-home Pet Health Diagnostic Platform:

- Utilize advanced sensors and visual questionnaires for a comprehensive analysis of your pet's health.
- Early detection and prevention of diseases, reducing veterinary costs, and ensuring proactive care.





toPet



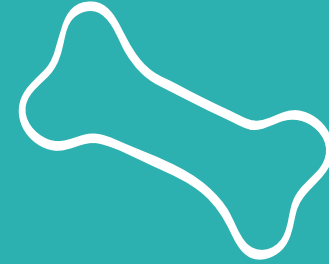
Gamification for Engagement:

- Participate in unique daily, weekly, and monthly challenges to collect accurate data about your pet.
- Strengthen the bond with your furry friend while contributing to their overall well-being.

WWW.TOPET.CA

topet

WWW.TOPET.CA



Dashboards for Veterinarians and Research Centers:

- Dedicated platforms for professionals to seamlessly communicate, monitor patient data, and contribute to ongoing research.
- Enhance collaboration between pet owners, veterinarians, and research centers for comprehensive pet healthcare.





Optional Assets for Enhanced Care:

- Health and GPS Tracker: Monitor your pet's activities and location effortlessly.
- Urine Test Kit: Conduct basic health assessments from the comfort of your home.

Flexible Pricing Plans for Every Need:

- Choose from a range of plans, including free access to core features and premium options for enhanced functionality.
- Tailor your pet healthcare experience based on your specific requirements and budget.

WWW.TOPET.CA

toPet
WWW.TOPET.CA



Tailored Solutions for Clinics and Labs:

- Enable professionals to elevate their capabilities with premium features, unlimited reports, and enhanced communication tools.
- Provide pet clinics and labs with the tools they need for efficient and comprehensive patient care.



TOPET's features are designed to make pet healthcare proactive, engaging, and accessible for pet owners, veterinarians, and research professionals alike.

Advantages

Early Detection and Prevention

Affordable Pet Healthcare

Engaging Gamification

Informed Decision-Making

Seamless Communication for Professionals

Optional Assets for Enhanced Care

Flexible Pricing Plans

Professional Solutions for Clinics and Labs

Accessible Anytime, Anywhere

Contribution to Research and Development

WWW.TOPET.CA



Pet Owners:

- Monitor your pet's health at home, enabling early detection of potential issues.
- Engage in gamified challenges for a more interactive and enjoyable pet care experience.
- Receive instant feedback through the Pet Symptom Checker for informed decision-making.
- Access optional assets like Health and GPS Trackers for enhanced monitoring.



WWW.TOPET.CA

toPet



Veterinarians and Clinics:

- Utilize dedicated dashboards for seamless communication with pet owners.
- Monitor patient data in real-time, enhancing the efficiency of diagnosis and treatment.
- Access advanced reports and continuous monitoring for comprehensive patient care.
- Offer a premium experience with optional assets for clients who seek enhanced care.



Pet Labs and Research Centers:

- Contribute to ongoing research efforts by accessing a continuous stream of pet health data.
- Collaborate with other professionals through shared dashboards and communication tools.
- Access advanced reports and insights for in-depth analysis and study.

Pet-Friendly Companies:

- Collaborate with TOPET for potential partnerships and promotions to engage with pet owners.
- Promote a pet-friendly culture within the company by encouraging employees to use TOPET for their pets.

WWW.TOPET.CA

toPet

WWW.TOPET.CA



Pharmaceutical Companies:

- Leverage data collected through TOPET for research and development of pet healthcare products.
- Collaborate with TOPET for potential partnerships and access to valuable insights.

Influencers and Pet Communities:

- Advocate for proactive pet healthcare by endorsing TOPET to your audience.
- Engage with pet communities through TOPET, fostering a sense of shared responsibility for pet well-being.



Collaborate with TOPET to offer your products or services through the platform.

Access data insights to tailor your offerings to the specific needs of pet owners.

TOPET's applications extend across various domains, providing a versatile and comprehensive solution for pet owners, professionals, and businesses in the pet care industry.



WWW.TOPET.CA

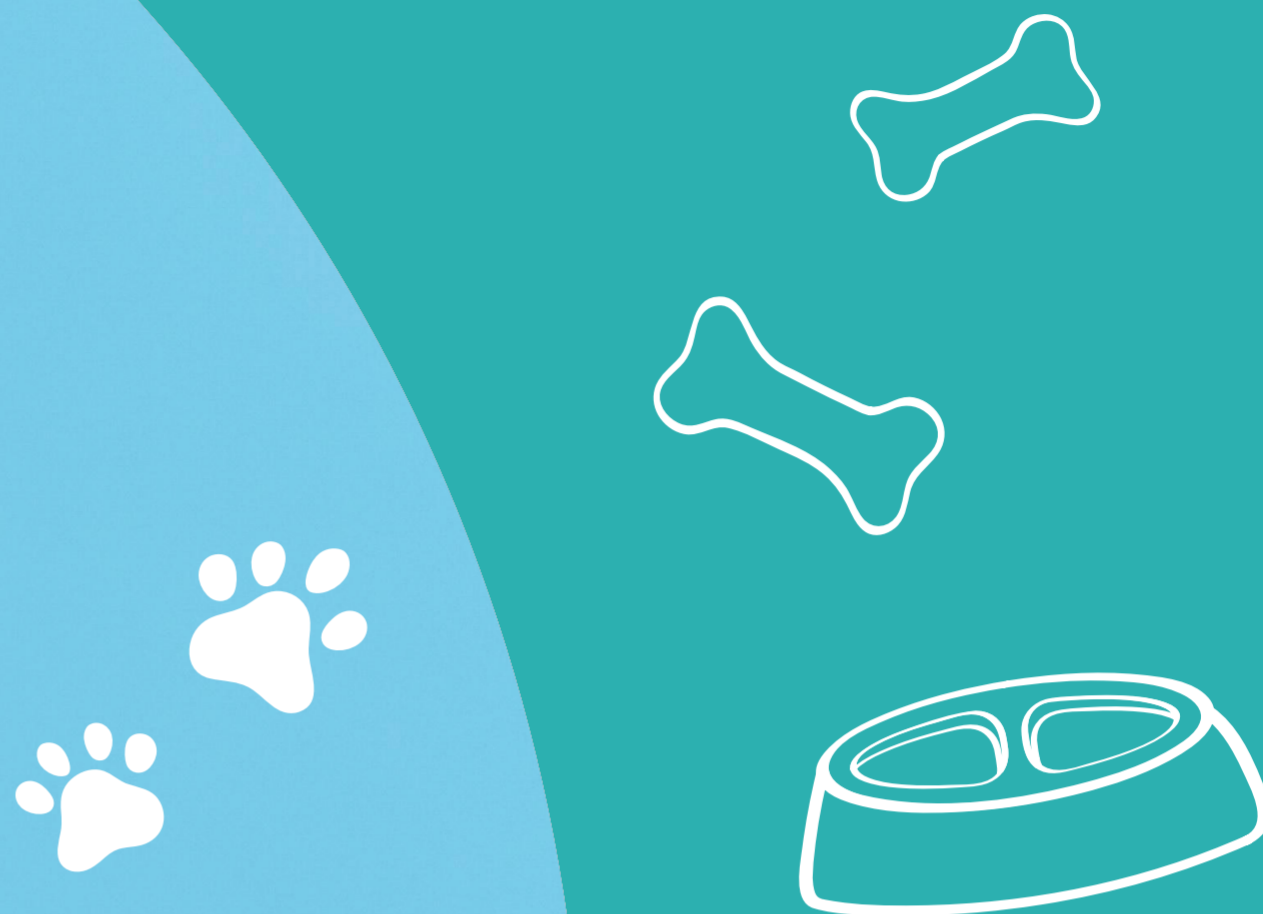


Target Markets

TOPET's target markets are two-fold: Canadian "Dog and Cat" owners aged 18 to 40, seeking early diagnostics for their pets, and pet veterinarians and clinics in the United States/Canada, desiring seamless data collection. Additionally, pharmaceutical companies and pet labs in Canada and North America, aiming to offer services online, find TOPET's intuitive digital platform invaluable for their operations. TOPET strategically addresses the diverse needs of these markets, promoting proactive and data-driven approaches to pet healthcare.

WWW.TOPET.CA

toPet
WWW.TOPET.CA



Contact us

Feel free to reach out to us using the following channels:

Email: info@topet.ca

Website: www.topet.ca

Twitter: [@TOPEHealth](https://twitter.com/TOPEHealth)

Facebook: [TOPEHealth](https://www.facebook.com/TOPEHealth)

Instagram: [@topet_health](https://www.instagram.com/topet_health)